

Weekly Newsletter Friday 22nd May 2026

# SOUTHVIEW SCHOOL & COLLEGE



## DIARY DATES

Monday 25<sup>th</sup> May - Friday 29<sup>th</sup> May - Half Term

Monday 1<sup>st</sup> June - Non Pupil Day

Thursday 18<sup>th</sup> June - School site Father's Day Sale

Friday 19<sup>th</sup> June - College site Father's Day Sale

Friday 3<sup>rd</sup> July - Non Pupil Day

**The Boys' Club that is starting to run on the college site would really like some Lego to build together.**

**If anyone has any sets or just loose bricks they no longer want at home, Boys' Club would really appreciate them.**

**If you have any to donate please send them in marked with 'Boy's Club'.**

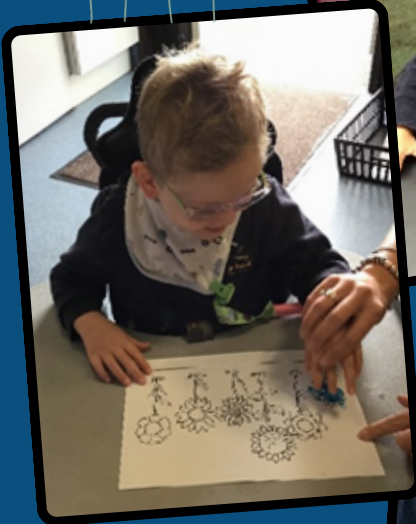
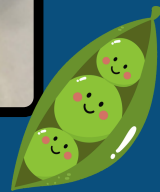
**Thank you so much for your support.**

Southview School & College  
Conrad Road, Witham, Essex  
CM8 2TA/2SD  
School: 01376 503505  
College: 01376 425372  
Email: [admin@southview.essex.sch.uk](mailto:admin@southview.essex.sch.uk)



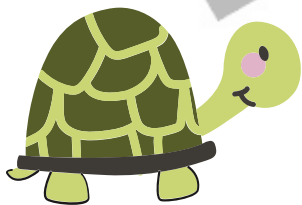
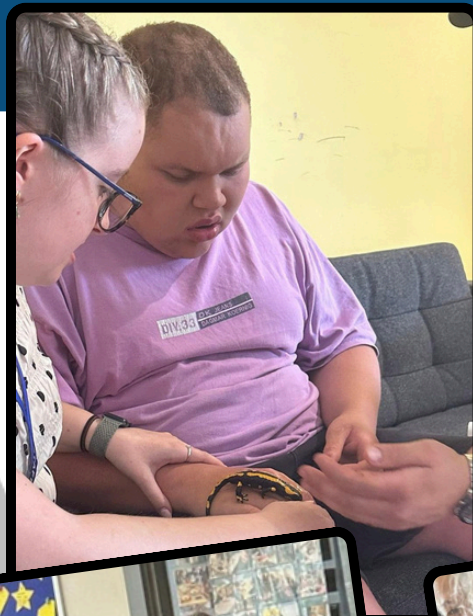
# SUNSHINE CLASS NEWS

This term Sunshine class has been looking at Our Wonderful World. We have been sticking and painting flowers and butterflies in art, feeding the birds that visit us and planting and growing peas for our garden and to go home.



We have had a great last week of half term. Yesterday we had some special visitors join us at The View. Exotic Explorers showed us 8 different animals, and the students all got to hold them.

Hope everyone enjoys the nice weather and has a lovely half term,  
George



Some students from across the school visited Maldon Petting Zoo this week.



Fun for everyone!

# Mersea Island Festival

A great escape on the Essex coast!



new challenges



new thrills



new experiences

## Inclusive Summer Activities



friends made



friends reunited

Camp prices include activities, meals and accommodation

**Sponsored places available**  
See website for details

**Day places from**  
£44.50 per person

**Week Camp**  
Sunday 23<sup>rd</sup> to  
Friday 28<sup>th</sup> August 2026


*Prices from £329.00 per person*

**Weekend Camp**  
Friday 28<sup>th</sup> to  
Monday 31<sup>st</sup> August 2026

Archery • Zipwire • Circus Skills  
Climbing • Paddle Boarding  
Music Workshops • Swimming  
Speedboat • Fishing • Art Tent  
Kayaking • Pedal Karts  
Band Workshop • Live Music  
Discos • And much more!



For further information or to book  
Telephone: 01206 383226  
Email: [info@merseafestival.org.uk](mailto:info@merseafestival.org.uk)  
Website: [www.merseafestival.org.uk](http://www.merseafestival.org.uk)

 [merseaislandfestival](https://www.facebook.com/merseaislandfestival)

 [mifcamp](https://www.instagram.com/mifcamp)



# What is it?

The Festival brings 40 years on the Essex coast, without a disability to try out new and challenging activities, develop their independence, make new friends ~ and all while having loads of fun!!!

**Over 300 people come from all over the UK to the week-long camp, the weekend camp, a day visit, or the whole Festival!** The Festival is ideal for Phab and Gateway clubs, youth groups and families with young people with a disability.



# What's on offer?

A wide variety of exciting activities and workshops that are fun but also challenge and stimulate, helping to build self-confidence and develop self-esteem in participants. Take a look at our website for some examples and more details.

Activities and workshops take place during the day, and in the evening there is live music, discos, themed nights or our legendary Camp Concert!



# Accommodation and food

Accommodation is mostly under canvas, with some beds in cabins for those who find it impossible to sleep in a tent. Meals are provided by our catering team and all dietary requirements are catered for. Snack and drinks are available during the entertainment each evening, as well as a licensed bar.

# Accessibility and support

The whole site is on one level and all facilities are wheelchair accessible. First Aid cover is provided. Our team of volunteers are on hand to make sure that everyone can have a fun and great experience, whatever their ability. Unfortunately they are not able to provide individual support and those who receive regular assistance should come along with a friend, supporter or as part of a group. **Please contact us to discuss any individual needs to make sure you get the most from your stay.**

